

Type NS-RPS2N Slip-On Roll Prong

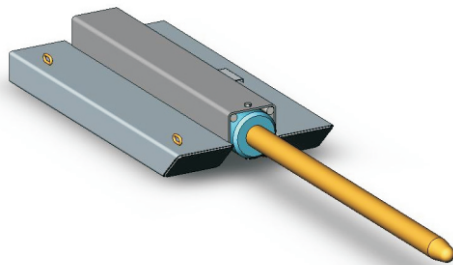
The type NS-RPS2N Slip-On Roll Prong is suitable for fabric, cable and coil products. Although this Roll Prong can be used for carpet handling, usage is generally restricted to larger Forklifts due to the extended load centre created by the length of the tines.

These attachments quickly adapt to almost any Forklift requiring only the connection of the Safety Chain to prevent unintentional disengagement. Prongs are manufactured from high tensile steel and can be made to any length.

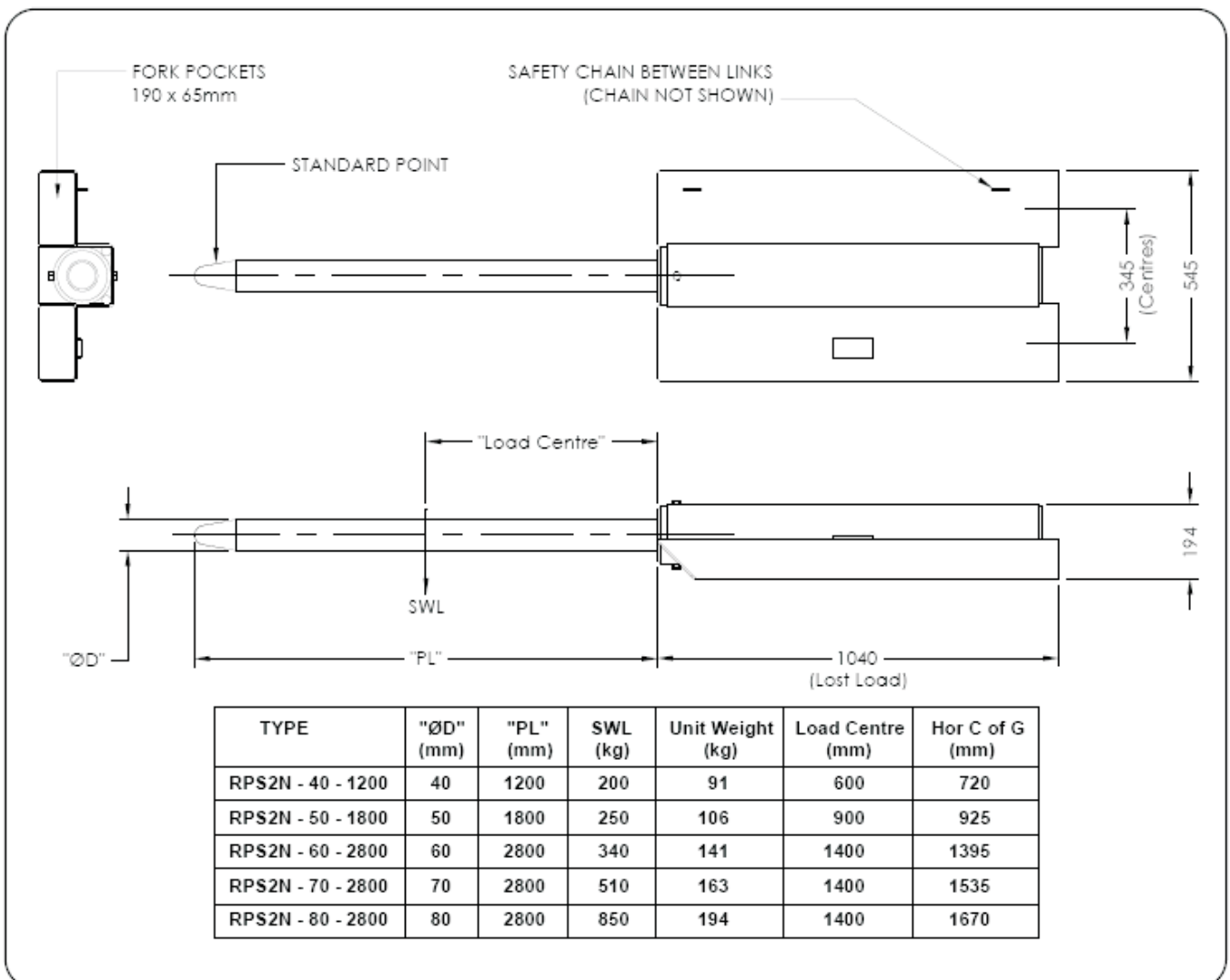
The Safe Working Load (SWL) of this unit varies depending on Prong chosen.

SPECIFICATIONS:

- Safe Working Load (SWL) – refer chart below
- Lost Load 1040mm
- Unit Weight – refer chart below
- Standard finish – painted enamel
- Refer diagram below for all other specifications



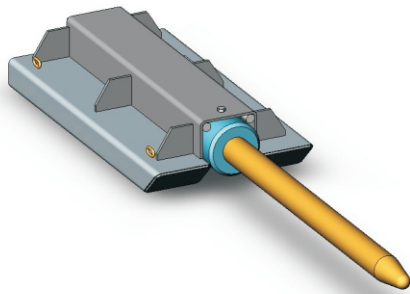
(NS-RPS2N with $\varnothing 70$ mm Prong shown)



Type NS-RPS3N Slip-On Roll Prong

The type NS-RPS3N Slip-On Roll Prong is suitable for fabric, cable and coil products. Although this Roll Prong can be used for carpet handling, usage is generally restricted to larger Forklifts due to the extended load centre created by the length of the tines.

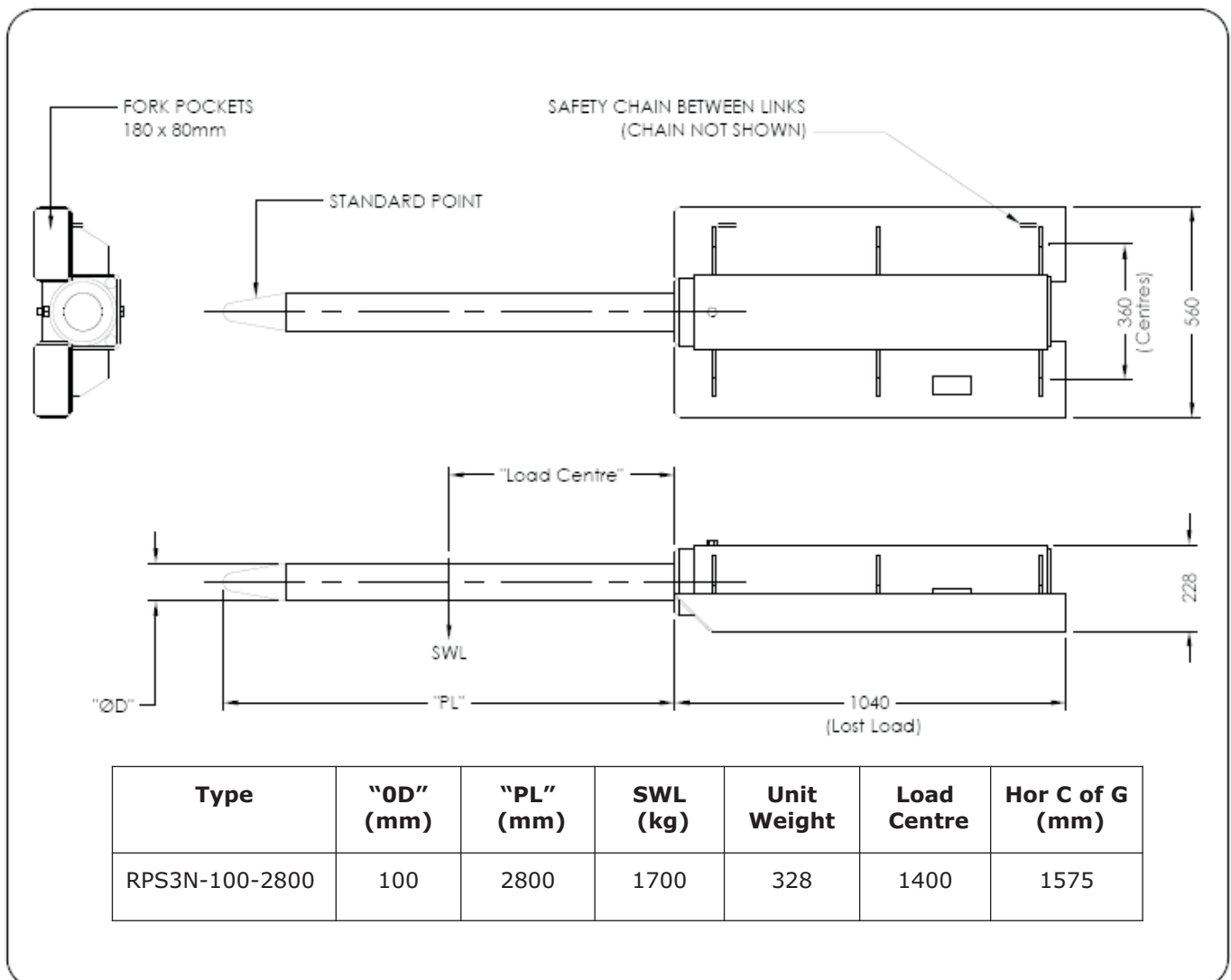
These attachments quickly adapt to almost any Forklift requiring only the connection of the Safety Chain to prevent unintentional disengagement. Prongs are manufactured from high tensile steel and can be made to any length. The Safe Working Load (SWL) of this unit varies depending on Prong chosen.



(NS-RPS3N with 100mm Prong shown)

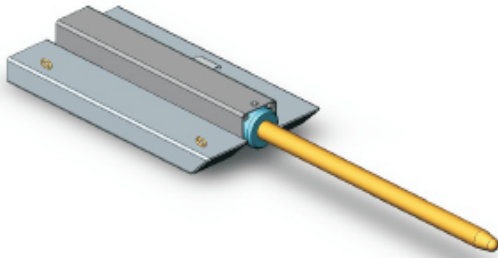
SPECIFICATIONS:

- Safe Working Load (SWL) – refer chart below
- Lost Load 1040mm
- Unit Weight – refer chart below
- Standard finish – painted enamel
- Refer diagram below for all other specifications

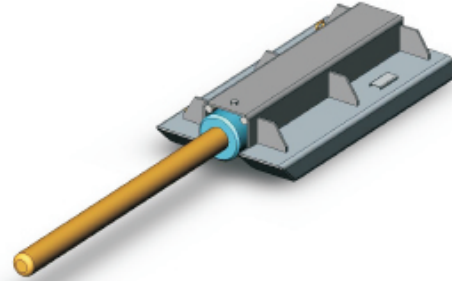


Type NS-RPS2N/3N Slip-On Roll Prong Load Chart

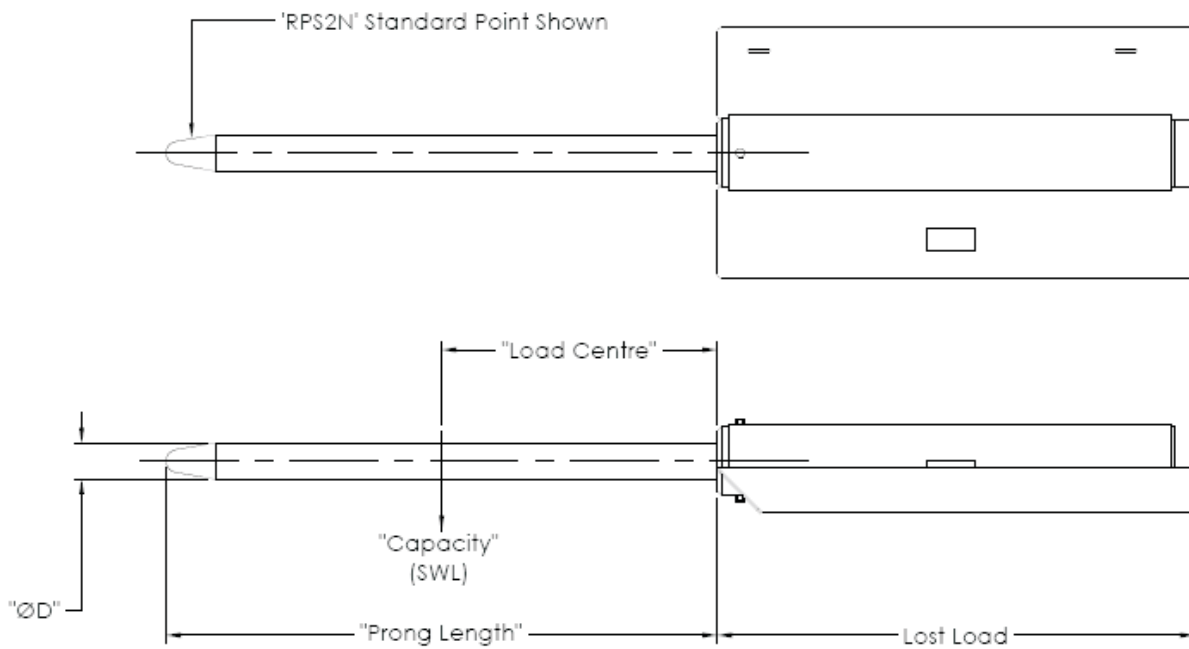
The following Load Chart details the "Capacities" (Safe Working Loads) for Roll Prong diameters from 40-100mm at various Load Centres for the type NS-RPS2N and NS-RPS3N Slip-on Roll Prong models. For complete Roll Prong Specifications, please refer to the relevant type Roll Prong "Drawing and Specifications" sales sheet PDF files on the National Sales Pty Ltd



RPS2N



RPS3N



SLIP-ON	"ØD"	"Capacity" (kg) at "Load Centre"													Basic Wgt	Add per
		600	700	800	900	1000	1200	1400	1500	1600	1800	2000	2500	3000	1200mm	100mm
Type/Load Centre	mm	kg	kg	kg	kg	kg	kg	kg	kg	kg	kg	kg	kg	kg	kg	kg
RPS2N - 40 - XXXX	40	200	150	100	60										81	1
RPS2N - 50 - XXXX	50	400	350	300	250	200	100	50							98	1.5
RPS2N - 60 - XXXX	60	800	700	600	530	480	400	340	320	300	285				108	2.2
RPS2N - 70 - XXXX	70	1200	1050	900	800	720	600	510	480	450	400	380			116	3
RPS2N - 80 - XXXX	80	2000	1750	1500	1350	1200	1000	850	800	750	685	600	440		128	4.2
RPS3N - 100 - XXXX	100	4000	3500	3000	2700	2400	2000	1700	1600	1500	1330	1200	810	700	230	6.2

The "Prong Length" should be approximately 75% of the Roll length.
The Basic Weight is calculated with a "Prong Length" of 1200mm.