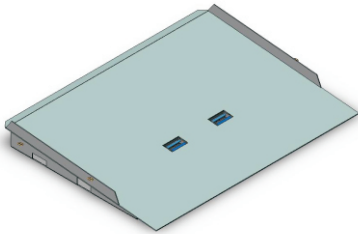


## Type NS-CRS10 Standard Container Ramp

The NS-CRS10 container ramp has 10T SWL and is 1.8m long and is fitted with fork pockets on both sides as well as front flip-up fork pockets.

Fast positioning and removal with the NS-CRS10 ramp. Fitted with fork pockets either side, along with front flip-ups allows placement in confined areas. Securing safety chains both sides for connection of the ramp to the container. Raised side plates prevent the forklift from driving off the side. Full gusseting under eliminates fatigue of the tread plate decking.



### SPECIFICATIONS:

- Size 1.8m Long x 2.32m Wide x 160mm High (ground to ramp deck)
- Structural Capacity 10000kg SWL
- Enamel Paint Finish

