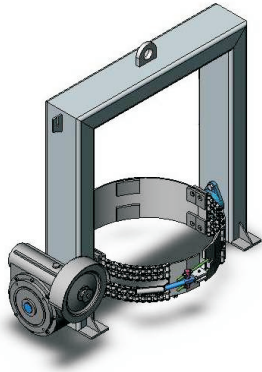


## Type NS-CDR-1000C Crane Drum Rotator

The type NS-CDR-1000C Crane Drum Rotator is a heavy lift capacity Crane Drum Rotator suitable for mining operations, manufacturers and foundries. The Drum is quickly clamped into the holder via the twin Chain Belly Strap allowing 360° rotation.

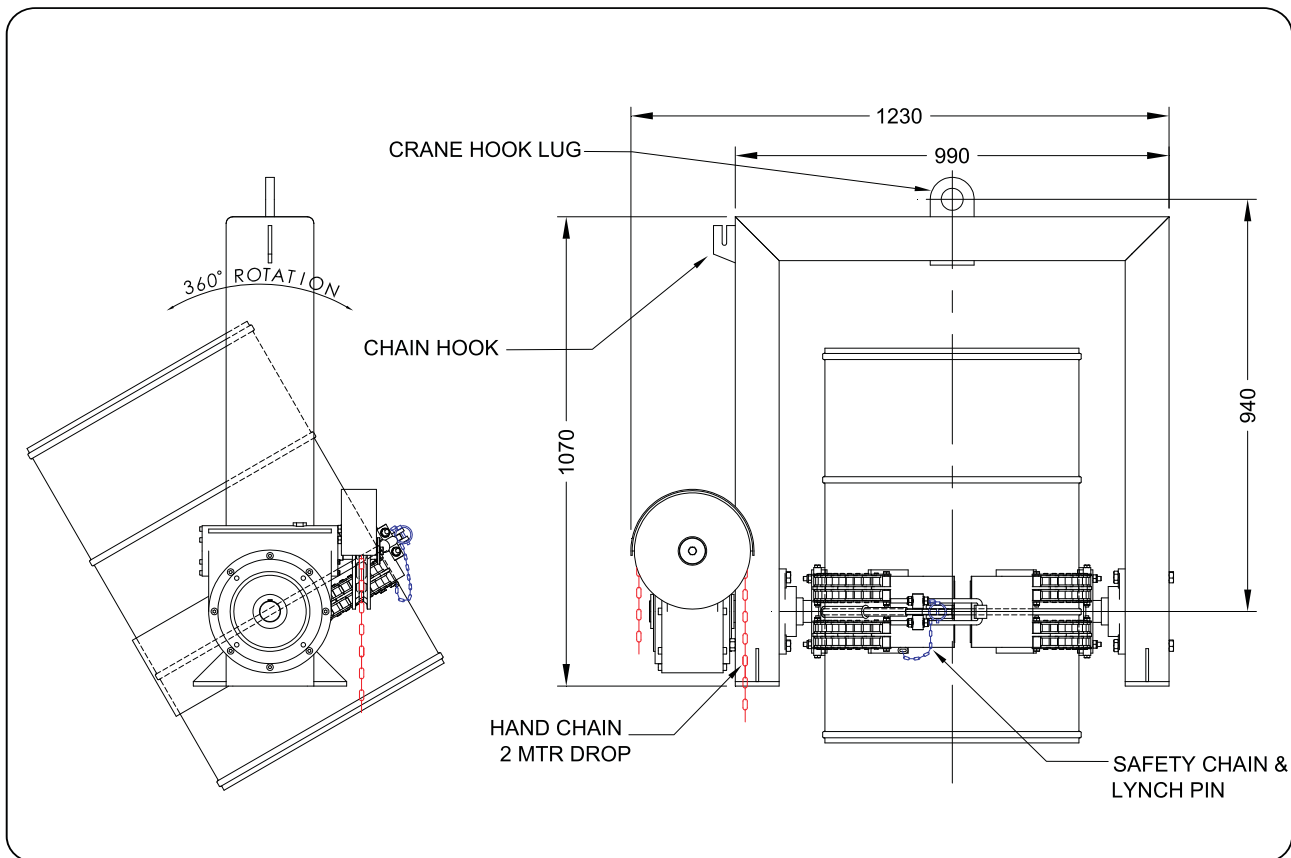
This Unit is also available with a Handle driven gearbox for rotation – type NS-CDR-1000H.



(shown without supplied Hand Chain)

### SPECIFICATIONS:

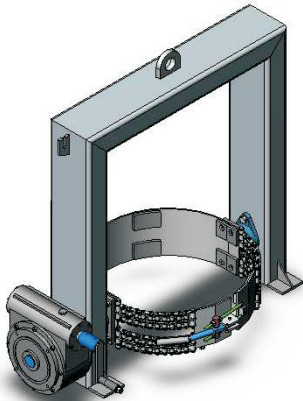
- Safe Working Load (SWL) 1000kg
- Unit Weight 220kg
- 360° Rotation
- Rotation Centre to Lifting Eye 940mm



## Type NS-CDR-1000H Crane Drum Rotator

The type NS-CDR-1000H Crane Drum Rotator is a heavy lift capacity Crane Drum Rotator suitable for mining operations, manufacturers and foundries. The Drum is quickly clamped into the holder via the twin Chain Belly Strap allowing 360° rotation.

This Unit is also available with a Chain driven gearbox for rotation – type NS-CDR-1000C.



### SPECIFICATIONS:

- Safe Working Load (SWL) 1000kg
- Unit Weight 220kg
- 360° Rotation
- Rotation Centre to Lifting Eye 940mm

