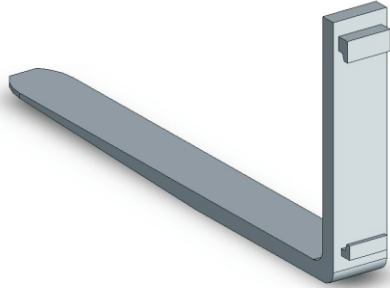


## NS-FT-2-1070-1900 Forklift Tines Class 2 1900kg 1070mm

Class 2 Forklift Tines 1070mm length with SWL 1900kg at 500mm available in Sydney, Melbourne, Brisbane, Adelaide and Perth for same day pickup.



### Forklift Tines 1070mm 1900kg

These fork tines fit any Class 2 forklift carriage and are 1070mm and have SWL of 1900kg @ 500mm load centre

Stock available Sydney, Brisbane, Melbourne, Perth and Adelaide. Delivery available Australia Wide.

Also available for same day pickup.

Not exactly what you are looking for? Forklift tines available in all sizes and capacities. Please contact us as we will have what you are chasing!

Model No	Mounting Class	Tine Capacity 500mm	Tine Capacity 600mm	Fork Tine Length & Width (mm)	Fork Tine Thickness	HCG	VCG	Weight
NS-FT-2-1070-1900	Class 2	1900kg	1580kg	1070 x 100	35mm	318mm	33mm	88kg
NS-FT-2-1070-2500	Class 2	2500kg	2080kg	1070 x 100	40mm	318mm	39mm	96kg
NS-FT-2-1220-1900	Class 2	1900kg	1580kg	1220 x 100	35mm	384mm	31mm	96kg
NS-FT-2-1220-2500	Class 2	2500kg	2080kg	1220 x 100	40mm	368mm	37mm	104kg
NS-FT-2-1370-2500	Class 2	2500kg	2080kg	1370 x 100	40mm	434mm	35mm	115kg
NS-FT-2-1070-3000	Class 2	3000kg	2500kg	1070 x 120	40mm	305mm	36mm	117kg
NS-FT-2-1220-3000	Class 2	3000kg	2500kg	1220 x 120	40mm	371mm	35mm	128kg
NS-FT-2-1370-3000	Class 2	3000kg	2500kg	1370 x 120	40mm	439mm	33mm	138kg
NS-FT-2-1530-3000	Class 2	3000kg	2500kg	1530 x 120	40mm	508mm	31mm	150kg
NS-FT-2-1830-3000	Class 2	3000kg	2500kg	1830 x 120	40mm	575mm	31mm	172kg
NS-FT-2-2130-3000	Class 2	3000kg	2500kg	2130 x 120	40mm	677mm	28mm	205kg
NS-FT-2-2440-3000	Class 2	3000kg	2500kg	2440 x 120	40mm	779mm	27mm	218kg
NS-FT-2-1530-4500	Class 2	4500kg	3750kg	1530 x 120	50mm	511mm	36mm	198kg
NS-FT-2-1830-4500	Class 2	4500kg	3750kg	1830 x 120	50mm	648mm	35mm	227kg